



MARQUIS® CROWN COLLECTION FEATURES

Control system	MQTouch™ touch-screen control
Therapy pumps	Dual-speed pumps
Jet system	Regal Hydrokinetic™ array of jets with stainless steel trim Regal Whitewater-4™ jets (excluding Wish 1-pump, Spirit)
H.O.T. Zones™	High Output Therapy massage zones
Flow control	Dynamic Flow Control™ valve for water and air
SmartClean™	Automated/programmable filtration software
ConstantClean+™	Integrated Vortex™ filtration with antimicrobial protection, in-line sanitation system & CD ozonator with Mazzei® injection
MaximizR™	Full-foam insulation
DuraShell®	High-impact acrylic bonded with fiberglass/resin matrix
Exterior	Durable, all-weather synthetic exteriors
DuraBase™	Solid sheet formed ABS plastic
Weathershield™ Cover	2 lb density foam; heat shield skirt; linear heat shield fold
Reflexology	Textured footwell pattern
Water feature	Four-point backlit fountains
Headrests	Cushioned, resilient EVA material
MoodMaker™	LED accent light configuration

MARQUIS® CROWN COLLECTION OPTIONS

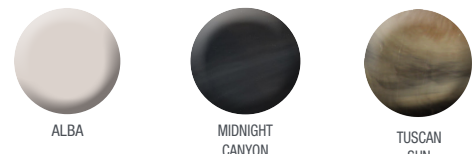
Bluetooth Audio System	Wireless audio streaming, twin speakers & subwoofer
Jewel™ Lighting	Interior: Dimmable multicolor LED lighting system Exterior: Dimmable white LED lighting system
MicroSilk®	Oxygen skin health & beauty treatment (except 2-P Wish)
Environments™	Crown Step I, Step II, Step II Hinged, 48 in Storage Bench 34 in Resort/Spirit Curved Bench
ControlMySpa™ RF	Wireless Cloud connectivity
Cover Companion™	Cover lift
Ultimate Experience Tote	Two plush Marquis towels, two insulated cups, one Luther Loon

“ I was spending \$200 to \$300 a month on massages to help with old sports injuries. Then I went golfing with a friend who had a hot tub at his house. After 36 holes, 15 minutes in his spa felt great. So I started shopping and decided on a Marquis. It's the best money I've ever spent. I use it year round, and enjoy 15 minutes of heaven every day!”

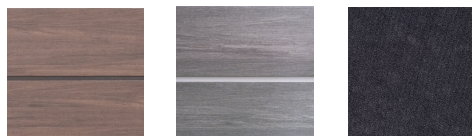
~Dan

COLOR CHOICES

DURASHELL® INTERIOR



EXTERIOR



COVER



Make-A-Wish.

MICROSILK®



marquisspas.com
atlswingspas.com
596 Hoffman Road, Independence, OR 97351
800.275.0888

Marquis® is a registered trademark. Marquis reserves the right to make product modifications and enhancements. Every effort has been made to ensure the accuracy of this brochure. However, Marquis reserves the right to improve its product without notice. This could create a minor variation between this brochure and the actual product you receive. We apologize for any inconvenience this may cause. For technical specifications and installation requirements, always refer to the Owner's Manual.

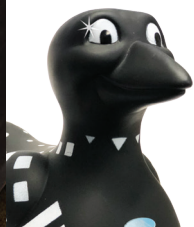
©Copyright 2021-2022 USA 710-6695

PATENT INFORMATION: MarquisSpas.com/patents



2023 CROWN COLLECTION

The crowning jewels of hot tubs



Where in the world is #LutherLoon @MarquisSpas?

INSIDE STORY

Marquis® is passionate about creating *The Ultimate Hot Tub Experience*®. From enhancing health and well-being, to rejuvenating body and mind, to connecting with family and friends. It's like having your own personal wellness center, where every soak improves your quality of life.

Ultimately, three hallmark features distinguish Marquis: superior high-flow therapy, easy and efficient water care, and luxurious skin health and beauty treatments. These "Big 3" features combine to deliver *The Ultimate Hot Tub Experience!*

Experience healing therapy precisely how you like it

The Crown Collection is a masterpiece of innovation. It combines our most advanced therapy features and luxury amenities into the most elegant and flexible hydromassage system on the market.

An array of Regal Hydrokinetic™ jets combine to form Specialized Massage Seats, each one offering unique therapeutic benefits.

The Deep-Tissue Massage Seat (with Target Touch jets) delivers a focused stream of water ideal for chronic pain or active lifestyles. The Shiatsu Massage Seat (with rotating Pulse Touch jets) helps you relax and rebalance. Thanks to gentle, persistent massage, the Relaxation Massage Seat (with Multi-Touch jets) is a peaceful location to re-center. And the Swedish Massage Seat (or Lounge) combines deep-tissue massage with a variety of sensations for all-in-one therapy.

The Dynamic Flow Control™ valve is powerfully simple. Turning the lever towards red activates the red jets. Turning it towards blue activates the blue jets. Or, anywhere in between activates all the jets in your seat. Plus, an intuitive air control valve dials in the perfect sensation. Thanks to a Dynamic Flow Control valve or auxiliary pump button near each seat, the perfect setting is always within reach. Just the way you like it!



HIGH-FLOW THERAPY

Like the weighty palms of a skilled masseuse, High Output Therapy™ Zones (H.O.T. Zones™) deliver deeper, more targeted therapy: Ideal for tight muscle groups in need of something extra. All H.O.T. Zone jets are red, so they are easy to identify. Simply turn your Dynamic Flow Control valve to red and unleash the power!

High-flow, no sting

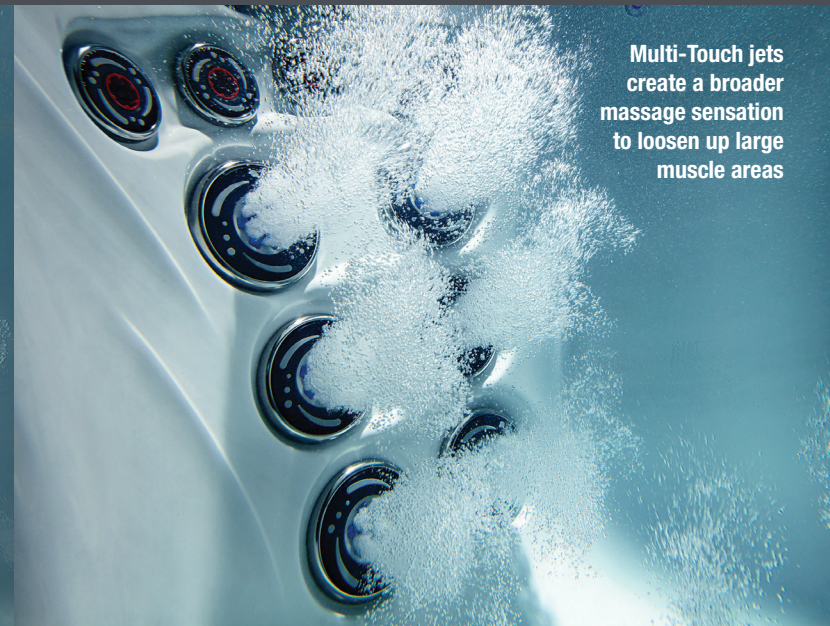
Most hot tub brands create an itching or burning sensation on the skin. In contrast, Marquis hot tubs deliver "high-flow, no sting" therapy. H.O.T. Zones penetrate deeply into muscles and fascia without irritating the skin surface. An assortment of Shoulder Zones, Lumbar Zones and Foot Zones allow you to focus the power where you need it most. The best way to understand it is to experience it firsthand. Schedule a test soak with your local Marquis Dealer and try it out. Feeling is believing!



MASSAGE



Target Touch jets provide a directional water flow to target precise areas of the body



Multi-Touch jets create a broader massage sensation to loosen up large muscle areas



Pulse Touch jets gently massage all the right places with rotating swirls of water



H.O.T. Zone Regal Whitewater-4 jet delivers everything from gentle foot massage to an exhilarating eruption of leg and foot therapy

CONSTANTCLEAN+

Clean, safe, crystal clear water

ConstantClean+ is the most efficient water management system on the market. It cleans more water volume in far less time: Up to 51 times per day in only 2-1/2 hours! It features high-flow Vortex™ filtration, plus the added muscle of automated in-line sanitation and ozonation. Simple yet sophisticated, it removes debris from top-to-bottom, and ensures convenient maintenance. High-quality Marquis filters feature increased surface area to improve efficiency, and an antimicrobial coating for added protection.



How does ConstantClean+ work? After pulling water through the Vortex filters, the high-flow pump pulls filtered water through the heater. Then, it enters two different sanitation processes. The first path leads to the ozonator, which safely kills pathogens and microorganisms, and oxidizes organic and inorganic contaminants. The second path leads to the in-line sanitation system. Slow-dose sanitizer treats the water, and a mineral (or conditioning) cartridge makes it feel silky. Thanks to SmartClean™ software, the entire process is automated for your convenience.

levels are balanced, the system basically runs on autopilot. Simply test your water levels periodically, and make minor adjustments if needed. That's it!

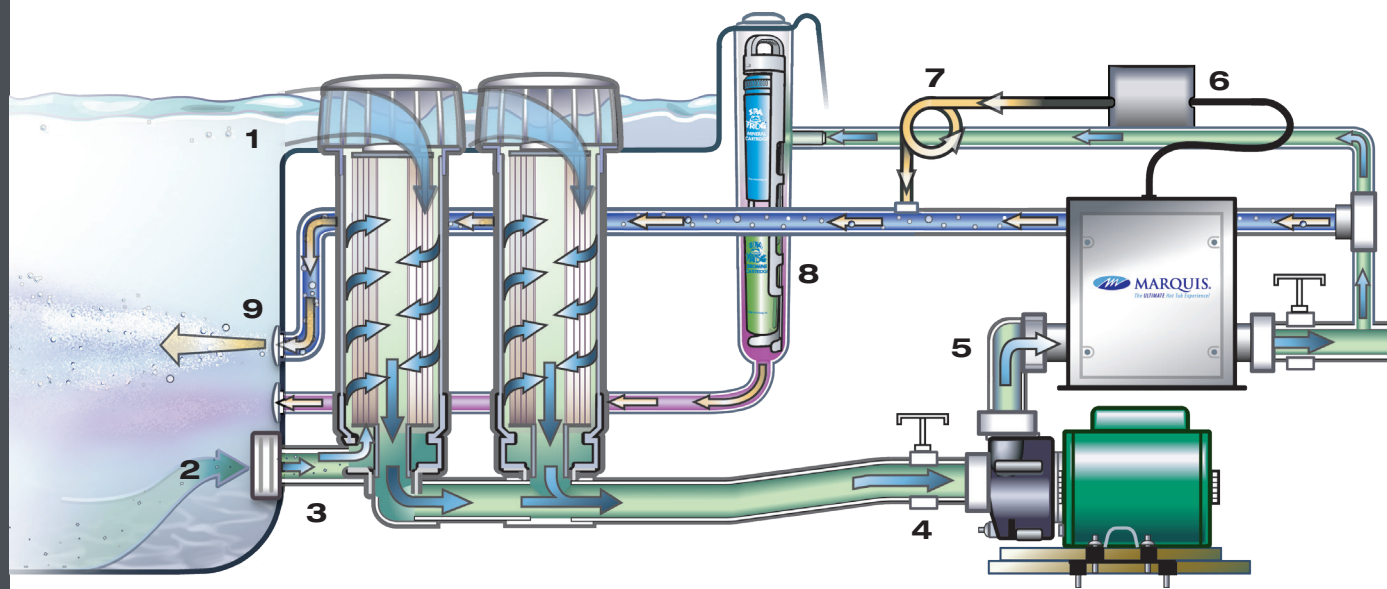
The entire system is highly efficient, requiring less chemical use and longer periods between draining and refilling. Truly, the ultimate in safe, clean water. Yet another "Big 3" reason you should consider a Marquis Crown Collection hot tub!

Worried about the coronavirus? The U.S. Centers for Disease Control (CDC) confirms that heat, humidity and chlorine or bromine in hot tubs should "remove or inactivate the virus that causes COVID-19." In other words, the coronavirus should not be contractable from properly maintained hot tub water. What a relief!

SmartClean makes it easy

SmartClean software automatically schedules cleaning cycles twice per day. It senses when you use your hot tub, and automatically schedules a cleanup cycle after each use. The daily schedule is preprogrammed but fully adjustable. Once your water

What about salt systems? All hot tubs require sanitizer to maintain clean, safe water. But some promote so-called 'chemical-free' hot tubs, claiming that salt systems are a more 'natural' alternative. Basically, salt systems generate sanitizer by converting salt into bromine or chlorine. Unfortunately, salt also accelerates the corrosion of internal metal components, such as heating elements. This leads to reduced performance and costly repair bills. In contrast, Marquis skips the salt problem by directly slow-dosing SmartChlor with Chlorine (USA), or Serene Bromine. You get clean, safe, crystal clear water, and long-term peace of mind.



ConstantClean+ is precisely engineered for clean water

1. Vortex skimmers skim surface contaminants then direct them into filter cartridges
2. Water is also drawn from the footwell through a safety suction fitting
3. Water is forced upward through the filter to trap debris, mixing, recirculating and filtering all water, surface to floor
4. Filtered water is drawn into the primary jet pump
5. Water is routed through the high-flow heater assembly
6. Ozonator converts oxygen into activated ozone gas.

- Mazzei® injector mixes ozone with water which is then introduced into the mixing chamber
7. Bacteria and other contaminants are oxidized before ozone reverts back to oxygen
8. Water passes through the in-line sanitation system and is treated with sanitizers before reentering the spa
9. Unused ozone and converted oxygen are reintroduced into the spa water



“ I owned another brand of hot tub, but my Marquis is by far easier to take care of. My water clarity is dramatically different! We have really noticed how much better our Marquis water smells and feels. Not only that, when I get out, my skin is not dry like it used to be in my old tub.”

~Tom

MICROSILK®

Experience radiant health & beauty

Crown Collection hot tubs can improve your quality of life, and your skin health too! MicroSilk® oxygen skin therapy and beauty treatment is optional on every Crown model. MicroSilk water oxygen levels are up to 70% higher than tap water, transporting dissolved oxygen to the skin. Billions of microbubbles envelope your body in an oxygen-infused cloud, promoting blood circulation, hydration and exfoliation. Microbubbles also provide a soothing, effervescent sensation that feels luxurious. It has been described as “an oxygen facial for your entire body.” MicroSilk is known to reduce the appearance of fine lines and wrinkles, and may even provide relief from symptoms of eczema and psoriasis. Everyone who adds MicroSilk loves it!

3

HEALING



Yes, oxygen really is good for your skin. Increased oxygen levels result in better circulation and cellular respiration, which creates glowing and radiant skin due to rapid skin cell regeneration.

Real, tangible effects, no surgery and no recovery time, makes MicroSilk hydrotherapy the anti-aging treatment of choice for the modern, sophisticated person. Instead of invasive medical procedures, your treatment happens as you soak away all the worries of the day.

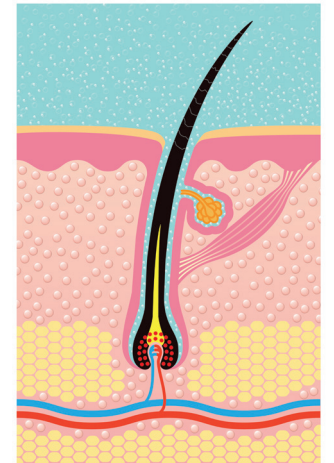
A MicroSilk bubble is negatively charged. Negatively charged ions are credited with increased serotonin production in humans, which is associated with emotional stability, a sense of well-being and promotes restful sleep. They also help eliminate free radicals in the body which are known to cause cellular damage, help relax your mind and body, and enhance recovery from physical exhaustion. This helps to slow the degenerative process which leads to premature aging.

Only Marquis has engineered the MicroSilk pump for peak performance to provide the level of health and beauty oxygen treatment you deserve. MicroSilk is another “Big 3” reason Marquis stands above the competition.

Microscopic bubbles penetrate into pores and sebaceous glands to oxygenate your skin, reduce fine lines and wrinkles, and promote collagen restoration as you soak.

Other benefits include:

- Improved skin oxygen tension
- Increased skin metabolism
- Enhanced skin cell growth
- Deeper cleansing of the pores to remove impurities
- Increased hydration
- Therapeutic levels of anions
- Neutralization of free radicals
- May relieve symptoms of eczema and psoriasis



“As a fitness and wellness trainer my clients are always asking for a treatment to make them look and feel more beautiful. After experiencing MicroSilk and seeing how radiant and smooth it makes my skin, I can highly recommend this amazing product!”

~ Jane

ALL THE EXTRAS

Crown Collection hot tubs are adorned with almost every luxury amenity. But it's also nice to have options, especially when it adds extra functionality or convenience.

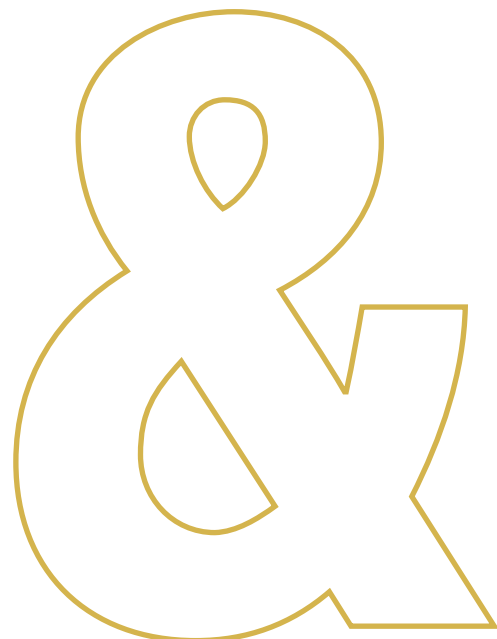
Easy and intuitive control

MQTouch™ is the command center of your hot tub. Simply tap the icons to fine-tune your settings. Check the filtration schedule, adjust temperature, check the time, dim the lights, or tap the Soak button for instant calm. Use the same interface to turn on MicroSilk® and control your mood music on equipped models. A quick tap flips the display for easy viewing inside or outside your hot tub. Want remote control? Add ControlMySpa™ wireless connectivity to control all the same settings from your mobile device.

Chill out or get the party started with optional Bluetooth Audio System. Featuring integrated speakers and a subwoofer, it can be controlled from your MQTouch display, or wirelessly using the ControlMySpa app.

Light up the night

Upgrade to Jewel™ LED lighting for a truly magical experience. An array of multipoint LEDs encircles the interior, and highlights the exterior in all directions. Jewel lets you change interior colors, adjust intensity, or cycle through multicolor transitions for entertainment and relaxation. Sights, sounds and sensations... The Crown Collection embraces all your senses!



AMBIANCE



Crown Environments™

Further enhance your hot tub with custom Environments modules. Designed and built by Marquis with the same exacting quality of craftsmanship and durable materials, Environments perfectly complement your Crown Collection hot tub. Steps and benches make it safer and easier to get in or out, and their sturdy construction ensures they won't blow away in a storm.



“ I'm not very tech-savvy – I can hardly program my coffee pot! But after just a few minutes of playing around with the MQTouch, I really felt in control. It's truly the easiest, intuitive hot tub control ever!”

~Kerry

Marquis and Make-A-Wish®

Since 2000, Marquis has been the preferred provider for Make-A-Wish hot tub and swim spa wishes. With help from our Dealer network, we team up to help wish kids find relief in the soothing water of a hot tub or swim spa. Over 1200 hot tub and swim spa wishes have been granted to children with critical health conditions across the United States, Canada, and the UK.

Hot tubs and swim spas are ideal for children who need physical therapy, or relief from the side effects of chemotherapy and radiation treatments. All in the comfort of their own home. It also creates a sanctuary for wish kids and their families to connect and spend valuable time together.

The partnership with Make-A-Wish is woven into our company culture. Every wish we help to fulfill is a reminder that our spas help people in need. In addition to over \$6.5 million in donations and discounts, a portion of the proceeds from select models is donated to Make-A-Wish.

Marquis is made in America with pride

While other manufacturers have taken their production offshores, Marquis is steadfast on American soil. We believe protecting American jobs and maintaining quality is right for our nation and our customers.

The Ultimate Hot Tub Experience!® embraces every aspect of the Marquis brand. From the customer experience, as you consult with your local Marquis Dealer... To the ownership experience, as you operate and maintain your hot tub... To the user experience, as you enjoy soothing relief year after year. Thanks to a strong foundation laid over the past 42 years and the special people behind Marquis, you can rest assured you are in very good hands. After all, that's what makes us Marquis.





THE SUMMIT

	NORTH AMERICA	INTERNATIONAL
SIZE	94 x 94 x 36 in	239 x 239 x 90 cm
MASSAGE SEATS	7	7
WATER CAPACITY	470 gal	1779 l
DRY WEIGHT	1100 lb	499 kg
FILLED WEIGHT	5020 lb	2277 kg
PUMPS	2 = 480 gpm	2 = 1817 lpm
ELECTRICAL	60 Hz 240V/30 or 50 A	50 Hz 230V/32A/3PH*
THERAPY JETS	65	65
H.O.T. ZONES	4	4
SPECIALIZED SEATS	2 Deep-Tissue, 1 Relaxation, 2 Shiatsu, 1 Swedish	

The Summit is the ultimate refuge to assemble your tribe. Three side-by-side Adirondack Chairs pamper every inch of your aching body. Across the way, four adjacent hydromassage seats deliver soothing relief, with easy access to the exhilarating Regal Whitewater-4™ jet. Four H.O.T. Zones provide targeted control and flexibility, and its open layout offers plenty of room to stretch your legs!

THE EPIC

	NORTH AMERICA	INTERNATIONAL
SIZE	90 x 90 x 36 in	229 x 229 x 90 cm
MASSAGE SEATS	6	6
WATER CAPACITY	390 gal	1476 l
DRY WEIGHT	850 lb	386 kg
FILLED WEIGHT	4103 lb	1814 kg
PUMPS	2 = 480 gpm	2 = 1817 lpm
ELECTRICAL	60 Hz 240V/30 or 50 A	50 Hz 230V/32A/3PH*
THERAPY JETS	53	53
H.O.T. ZONES	5	5
SPECIALIZED SEATS	2 Deep-Tissue, 1 Relaxation, 2 Shiatsu	

The Epic is a true legend. Featuring sculpted multilevel seating for six, including a full-body Adirondack Chair for powerful neck-to-feet therapy. The super-deep soak seat envelopes you in warmth, targeting your neck, shoulders and spinal column. Boasting five H.O.T. Zones – Lumbar, Shoulder and Foot – including a Regal Whitewater-4 jet, you are bound to recount this hot tub for generations!

THE EUPHORIA

	NORTH AMERICA	INTERNATIONAL
SIZE	90 x 90 x 36 in	229 x 229 x 90 cm
MASSAGE SEATS	7	7
WATER CAPACITY	380 gal	1438 l
DRY WEIGHT	825 lb	374 kg
FILLED WEIGHT	3994 lb	1812 kg
PUMPS	2 = 480 gpm	2 = 1817 lpm
ELECTRICAL	60 Hz 240V/30 or 50 A	50 Hz 230V/32A/3PH*
THERAPY JETS	53	53
H.O.T. ZONES	5	5
SPECIALIZED SEATS	2 Deep-Tissue, 1 Relaxation, 1 Shiatsu, 1 Swedish	

The Euphoria is a royal party in the making. Featuring a symmetrical layout with seven multilevel seats, including two extra deep therapy seats positioned side-by-side with full-body massage. Every seat can reach the explosive Regal Whitewater-4 jet for powerful leg and foot therapy. Five H.O.T. Zones ensure you and your guests enjoy limitless euphoria!

THE DESTINY

	NORTH AMERICA	INTERNATIONAL
SIZE	85 x 85 x 36 in	216 x 216 x 90 cm
MASSAGE SEATS	7	7
WATER CAPACITY	310 gal	1173 l
DRY WEIGHT	700 lb	318 kg
FILLED WEIGHT	3289 lb	1492 kg
PUMPS	2 = 400 gpm	2 = 1514 lpm
ELECTRICAL	60 Hz 240V/30 or 50 A	50 Hz 230V/32A/3PH*
THERAPY JETS	41	41
H.O.T. ZONES	4	4
SPECIALIZED SEATS	2 Deep-Tissue, 1 Relaxation, 1 Shiatsu	

The Destiny is a harbinger of relaxation. With seven hydromassage seats facing each other, it's the perfect setting for deep conversations. The two deep seats deliver Lumbar or Shoulder H.O.T. Zone relief. One mid-height therapy seat features a broad cluster of H.O.T. Zone jets to work all your back muscles. A Regal Whitewater-4 jet brings the total H.O.T. Zones to four. Plus, higher seats allow for everyone to find their comfort zone. Your Destiny awaits!

THE RESORT

	NORTH AMERICA	INTERNATIONAL
SIZE	85 x 85 x 36 in	216 x 216 x 90 cm
MASSAGE SEATS	5	5
WATER CAPACITY	360 gal	1363 l
DRY WEIGHT	760 lb	345 kg
FILLED WEIGHT	3762 lb	1706 kg
PUMPS	2 = 400 gpm	2 = 1514 lpm
ELECTRICAL	60 Hz 240V/30 or 50 A	50 Hz 230V/32A/3PH*
THERAPY JETS	50	50
H.O.T. ZONES	3	3
SPECIALIZED SEATS	2 Deep-Tissue, 2 Swedish	

The Resort is worthy of both King and Queen. Its uniquely curvaceous design delivers comfort and exceptional hydrotherapy. Multilevel seating for five includes dual Adirondack Chairs: one featuring Lumbar H.O.T. Zone jets, the other featuring Shoulder H.O.T. Zone jets, and both featuring powerful leg and foot jets. Two deep therapy seats and an entry/cooldown seat complete the layout. A Regal Whitewater-4 jet brings the total H.O.T. Zone count to three, making for a truly decadent destination!

THE WISH

	NORTH AMERICA	INTERNATIONAL
SIZE	77 x 77 x 36 in	196 x 196 x 90 cm
MASSAGE SEATS	5	5
WATER CAPACITY	260 gal	984 l
DRY WEIGHT	550/600 lb	249/272 kg
FILLED WEIGHT	2721/2771 lb	1234/1257 kg
1-PUMP	240 gpm	908 lpm
2-PUMP	320 gpm	1211 lpm
ELECTRICAL	60 Hz 240V/30 or 50 A	50 Hz 230V/32A/3PH*
THERAPY JETS	29 or 30	29 or 30
H.O.T. ZONES	2 or 3	2 or 3
SPECIALIZED SEATS	2 Deep-Tissue, 1 Relaxation, 1 Shiatsu	

The Wish is everything you've dreamed a hot tub could be. Four multilevel seats cater to every body type, including an elevated seat for warming up or cooling down. Plus, a full-body lounge with ample room to cradle you in comfort features Lumbar H.O.T. Zone jets. A deep therapy seat delivers Shoulder H.O.T. Zone jets. Plus, two unique seats and a cooldown seat can also take advantage of the Regal Whitewater-4 jet (2-pump model). A portion of the proceeds from the sale of the Wish is donated to Make-A-Wish® to help grant wishes for children with critical health conditions.

THE SPIRIT

	NORTH AMERICA	INTERNATIONAL
SIZE	66 x 85 x 36 in	168 x 216 x 90 cm
MASSAGE SEATS	4	4
WATER CAPACITY	265 gal	1003 l
DRY WEIGHT	460 lb	209 kg
FILLED WEIGHT	2670 lb	1211 kg
PUMP	1 = 240 gpm	1 = 908 lpm
ELECTRICAL	60 Hz 240V/30 or 50 A	50 Hz 230V/32A/3PH*
THERAPY JETS	32	32
H.O.T. ZONES	2	2
SPECIALIZED SEATS	1 Deep-Tissue, 1 Relaxation, 1 Shiatsu	

The Spirit flows freely with healing therapy. Its curved front entry offers an elegant approach, with four hydromassage seats for up to three people. The soothing lounge with Shoulder H.O.T. Zone jets delivers full-body therapy. The deep therapy seat with Lumbar H.O.T. Zone jets works all your back muscles. Plus, a cooldown seat lifts your heart above the waterline, and makes for easier entry and exit. The Spirit will renew your body and mind every day!



MICROSILK® OPTION AVAILABLE!

*May be wired 1x16A, 2x16A or 1x32A, 3PH optional



MICROSILK OPTION AVAILABLE!



MICROSILK OPTION AVAILABLE!



MICROSILK OPTION AVAILABLE!



MICROSILK OPTION AVAILABLE!



MICROSILK OPTION AVAILABLE! 1-PUMP!



MICROSILK OPTION AVAILABLE!